

Fabryka Narzędzi POREBA Sp. z o.o.

LATHE CHUCKS UCHWYTY TOKARSKIE



line—linia
„POREBA”

Poręba 2015

line - linia **PORĘBA**

Standout characteristics of FN PORĘBA Chucks:

- Chuck Body toughened to 28 HRC giving improved durability.
- Standardized replacement parts, that are interchangeable with parts of chucks of manufacturers such as: MARIO PINTO (Italy), FORKARD and ROHM (Germany), BISON (Poland) and CUSHMANN (USA).
- All of the sizing parameters of chuck mountings according to DIN & GOST standards.
- ISO Certification No 44100132840 awarded by the German Company TUV NORD CERT GmbH.

Cechy wyróżniające uchwyty tokarskie FN PORĘBA:

- Stalowym korpusem, ulepszanym cieplnie do twardości 28 HRC w celu zapewnienia trwałej i bezawaryjnej pracy z zachowaniem wysokich parametrów dokładności mocowania;
- Pełną zamiennością szczęk i zabieraków z innymi, liczącymi się producentami na rynku, takimi jak: MARIO PINTO (Włochy), FORKARD i ROHM (Niemcy), BISON (Polska) i CUSHMANN (USA).
- Parametrami mocowania zgodnymi z normami DIN oraz GOST;
- Standardami produkcji wg Certyfikatu ISO Nr 44100132840 udzielonemu przez TUV NORD CERT GmbH.

SPIS TREŚCI		CONTENTS	
TYP - TYPE	Asortyment	Assortment	Page Strona
DIN 55026, DIN 55027, DIN 55029	Wymiary końcówek wrzecion	Machine Spindle Nose Sizes	1
T504, T505, T704, T705 T574, T575, T774, T775	Uchwyty z mocowaniem cylindrycznym wg DIN 6350 , mocowanie od tyłu i od przodu uchwytu	Self-centering scroll chucks with DIN 6350 plain back and front mounting	2
T514, T515, T714, T715	Uchwyty z chwytem typu A , wg DIN 55026	Self-centering scroll chucks with DIN 55026 type A mounting	3
T534, T535, T734, T735	Uchwyty z chwytem typu C , wg DIN 55027	Self-centering scroll chucks with DIN 55027 type C mounting	4
T544, T545, T744, T745	Uchwyty z chwytem typu D , wg DIN 55029	Self-centering scroll chucks with DIN 55029 type D mounting	5
T564, T565	Uchwyty z regulowanym osadzeniem	Self-centering scroll chucks with fine adjustment mounting	6
SJZ, SJW, SJM, SP, SGT, SGM, SDT, SDM,	Szczęki uchwytów manualnych	Manual lathe chucks jaws	7
SGTM, SGMM	Szczęki uchwytów mechanicznych	Power chucks jaws	8
KZA, TMO, TS, KZ, KL	Części zamienne do uchwytów	Spare parts	12
TZ210, TZ212	Tarcze zabierakowe z chwytem typu A , wg DIN 55026	Adapter plates with DIN 55026 type A mounting	13
TZ230, TZ232	Tarcze zabierakowe z chwytem typu C , wg DIN 55027	Adapter plates with DIN 55027 type C mounting	14
TZ240, TZ242	Tarcze zabierakowe z chwytem typu D , wg DIN 55029	Adapter plates with DIN 55029 type D mounting	15
TZ215, TZ235, TZ245	Tarcze zabierakowe do uchwytów z regulowanym osadzeniem	Adapter plates for chucks with fine adjustment mounting	16
Klasy dokładności uchwytów		Centering accuracy	III

MACHINE SPINDLE NOSE SIZES WYMIARY KOŃCÓWEK WRZECION

DIN 55026 TYPE A and/oraz ISO 702/I

Shape A: tapped holes in adapter plate (outer bolt circle) without inner bolt circle.

Shape B: tapped holes in adapter plate (outer bolt circle) and in inner bolt circle.

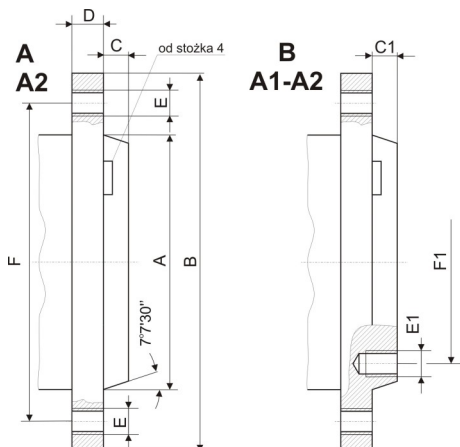
Value in brackets are regarding to differences for ISO 702/I.

Odmiana A: gwintowane otwory jedynie na zewnętrznym okręgu tarczy.

Odmiana B: gwintowane otwory na dwóch okręgach tarczy.

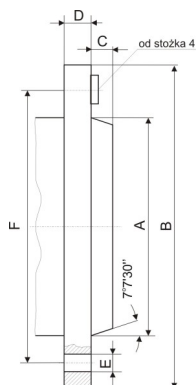
Dane w nawiasach dotyczą danych różnych dla ISO 702/I.

Adapter/zabierak



Spindle nose size Stożek wrzeciona	A max	B	C	C1	D	E	E1	F	F1
3	53,983	92	11	---	16	3xM10	---	70,6	---
4	63,521	108	11	---	20	11xM10	---	82,6	---
5	82,573	133	13	14,288	22	11xM10	8xM10	104,8	61,9
6	106,385	165	14	15,875	25	11xM12	8xM12	133,4	82,6
8	139,731	210	16	17,462	28	11xM16	8xM16	171,4	111,1
11	196,883	280	18	19,050	35	11xM20 (11xM18)	8xM20 (8xM18)	235,0	165,1
15	285,791	380	19	20,683	42	12xM24 (12xM22)	11xM24 (11xM22)	330,2	247,6
20	412,795	520	21	22,225	48	12xM24	11xM24	463,2	368,3

DIN 55027 TYPE C and/oraz ISO 702/III

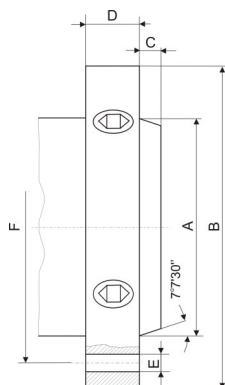


Spindle nose size Stożek wrzeciona	A max	B	C	D	E	F
3	53,983	102	11	16	3x21	75,0
4	63,521	112	11	20	3x21	85,0
5	82,573	135	13	22	4x21	104,8
6	106,385	170	14	25	4x23	133,4
8	139,731	220	16	28	4x29	171,4
11	196,883	290	18	35	6x36	235,0
15	285,791	400	19	42	6x43	330,2
20	412,795	540	21	48	6x43	463,2

Adapter/zabierak



DIN 55029 TYPE D and/oraz ISO 702/II



Spindle nose size Stożek wrzeciona	A max	B	C	D	E	F
3	53,983	92	11	32	3x15,1	70,6
4	63,521	117	11	34	3x16,7	82,6
5	82,573	146	13	38	6x19,8	104,8
6	106,385	181	14	45	6x23,0	133,4
8	139,731	225	16	50	6x26,2	171,4
11	196,883	298	18	60	6x31,0	235,0
15	285,791	403	19	70	6x35,7	330,2
20	412,795	546	21	82	6x42,1	463,2

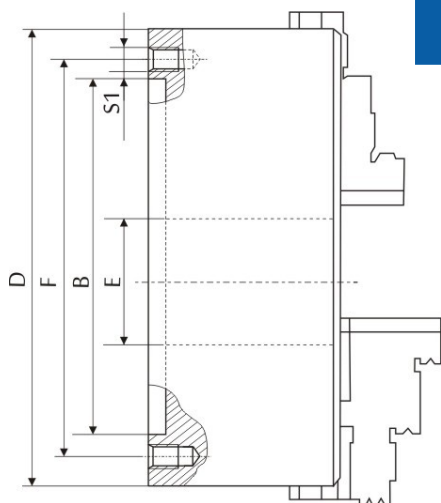
Adapter/zabierak



DIN 6350

T504 T505

T704 T705



T504 and/i T704
solid jaws/ szczęki jednolite

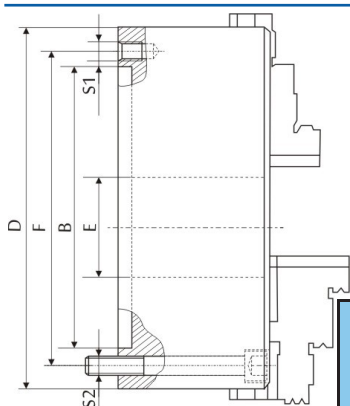


T505 and/i T705
2-pieces jaws/szczęki dzielone

3-jaws and 4-jaws, self-centering steel body scroll chucks with **DIN 6350** plain back mounting

Uchwyty samocentrujące 3 i 4-szczękowe stalowe z mocowaniem cylindrycznym od tyłu wg **DIN 6350**

D	Common dimensions/ Wymiary wspólne					3-jaws/ 3-szczękowe				4-jaws/4-szczękowe			
						T504 solid jaws/szczęki jednolite		T505 2-pieces jaws/szczęki dzielone		T704 solid jaws/szczęki jednolite		T705 2-pieces jaws/szczęki dzielone	
	B H7	E	F	S1	Type	Code	Type	Code	Type	Code	Type	Code	
100	70	20,0	83,0	3xM8	T504-100	6525041000100	----	----	T704-100	6527041000100	----	----	
125	95	32,0	108,0	3xM8	T504-125	6525041250100	T505-125	6525051250100	T704-125	6527041250100	T705-125	6527051250100	
160	125	42,0	140,0	6xM10	T504-160	6525041600100	T505-160	6525051600100	T704-160	6527041600100	T705-160	6527051600100	
200	160	55,0	176,0	6xM10	T504-200	6525042000100	T505-200	6525052000100	T704-200	6527042000100	T705-200	6527052000100	
250	200	76,0	224,0	6xM12	T504-250	6525042500100	T505-250	6525052500100	T704-250	6527042500100	T705-250	6527052500100	
315	260	103,0	286,0	6xM16	T504-315	6525043150100	T505-315	6525053150100	T704-315	6527043150100	T705-315	6527053150100	
400	330	136,0	362,0	6xM16	T504-400	6525044000100	T505-400	6525054000100	T704-400	6527044000100	T705-400	6527054000100	
500	420	190,0	458,0	6xM16	T504-500	6525045000100	T505-500	6525055000100	T704-500	6527045000100	T705-500	6527055000100	
630	545	252,0	586,0	6xM16	T504-630	6525046300100	T505-630	6525056300100	T704-630	6527046300100	T705-630	6527056300100	
800	710	281,4	368,3	6xM20	T504-800	6525048000100	T505-800	6525058000100	T704-800	6527048000100	T705-800	6527058000100	



3-jaws and 4-jaws, self-centering steel body scroll chucks with **DIN 6350** plain back and front mounting

Uchwyty samocentrujące 3 i 4-szczękowe stalowe z mocowaniem cylindrycznym od przodu i od tyłu wg **DIN 6350**

T574 T575

T774 T775

D	S2	3-jaws/ 3-szczękowe				4-jaws/4-szczękowe			
		T574 solid jaws/szczęki jednolite		T575 2-pieces jaws/szczęki dzielone		T774 solid jaws/szczęki jednolite		T775 2-pieces jaws/szczęki dzielone	
		Type	Code	Type	Code	Type	Code	Type	Code
100	3xM8	T574-100	6525741000100	----	----	T774-100	6527741000100	----	----
125	3xM8	T574-125	6525741250100	T575-125	6525751250100	T774-125	6527741250100	T775-125	6527751250100
160	6xM10	T574-160	6525741600100	T575-160	6525751600100	T774-160	6527741600100	T775-160	6527751600100
200	6xM10	T574-200	6525742000100	T575-200	6525752000100	T774-200	6527742000100	T775-200	6527752000100
250	6xM12	T574-250	6525742500100	T575-250	6525752500100	T774-250	6527742500100	T775-250	6527752500100
315	6xM16	T574-315	6525743150100	T575-315	6525753150100	T774-315	6527743150100	T775-315	6527753150100
400	6xM16	T574-400	6525744000100	T575-400	6525754000100	T774-400	6527744000100	T775-400	6527754000100
500	6xM16	T574-500	6525745000100	T575-500	6525755000100	T774-500	6527745000100	T775-500	6527755000100
630	6xM16	T574-630	6525746300100	T575-630	6525756300100	T774-630	6527746300100	T775-630	6527756300100
800	6xM20	T574-800	6525748000100	T575-800	6525758000100	T774-800	6527748000100	T775-800	6527758000100

Example of denotation lathe chucks accuracy class:
T504-200-A – A class lathe chuck accuracy
T504-200-I – I class lathe chuck accuracy
T504-200 – normal class lathe chuck accuracy

Przykłady określenia uchwyty w zależności od klasy dokładności:
T504-200-A – uchwyt w klasie dokładności A
T504-200-I – uchwyt w klasie dokładności I
T504-200 – uchwyt w klasie dokładności normal

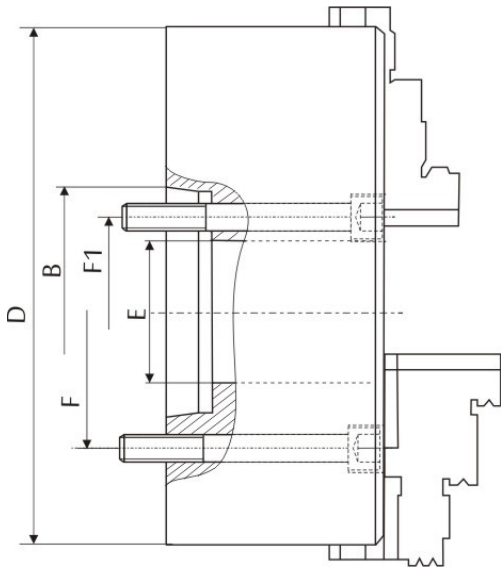
Accuracy class by
Page III data

Klasa dokładności
wg danych
na Stronie III

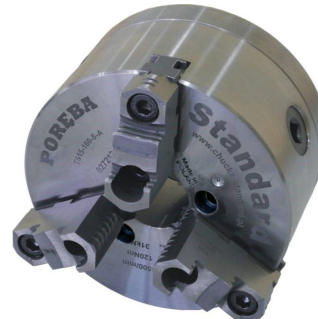
DIN 55026

T514 T515

T714 T715



T514 and/i T714
solid jaws/ szczęki jednolite



T515 and/i T715
2-pieces jaws/szczęki dzielone

3-jaws and 4-jaws, self-centering steel body scroll chucks with **DIN 55026** type **A** mounting

Uchwyty samocentrujące 3 i 4-szczękowe stalowe z mocowaniem typu **A** wg **DIN 55026**

D	Common dimensions Wymiary wspólne					3-jaws/ 3-szczękowe				4-jaws/4-szczękowe			
						T514 solid jaws/ szczęki jednolite		T515 2-pieces jaws/ szczęki dzielone		T714 solid jaws/ szczęki jednolite		T715 2-pieces jaws/ szczęki dzielone	
	Taper Nr st.	B	E	F	F1	Type	Code	Type	Code	Type	Code	Type	Code
160	5	82,573	42,0	-	61,9	T514-160-5	6525141600500	T515-160-5	6525151600500	T714-160-5	6527141600500	T715-160-5	6527151600500
	6	106,385	55,0	-	82,6	T514-200-6	6525142000600	T515-200-6	6525152000600	T714-200-6	6527142000600	T715-200-6	6527152000600
200	5	82,573	42,0	-	61,9	T514-200-5	6525142000500	T515-200-5	6525152000500	T714-200-5	6527142000500	T715-200-5	6527152000500
	6	106,385	55,0	-	82,6	T514-200-6	6525142000600	T515-200-6	6525152000600	T714-200-6	6527142000600	T715-200-6	6527152000600
	8	139,731	76,0	-	111,1	T514-250-8	6525142500800	T515-250-8	6525152500800	T714-250-8	6527142500800	T715-250-8	6527152500800
250	5	82,573	76,0	104,8	-	T514-250-5	6525142500500	T515-250-5	6525152500500	T714-250-5	6527142500500	T715-250-5	6527152500500
	6	106,385	55,0	-	82,6	T514-250-6	6525142500600	T515-250-6	6525152500600	T714-250-6	6527142500600	T715-250-6	6527152500600
315	6	106,385	103,0	133,4	-	T514-315-6	6525143150600	T515-315-6	6525153150600	T714-315-6	6527143150600	T715-315-6	6527153150600
	8	139,731	80,0	-	111,1	T514-315-8	6525143150800	T515-315-8	6525153150800	T714-315-8	6527143150800	T715-315-8	6527153150800
400	6	106,385	103,0	133,4	-	T514-400-6	6525144000600	T515-400-6	6525154000600	T714-400-6	6527144000600	T715-400-6	6527154000600
	8	139,731	136,0	171,4	-	T514-400-8	6525144000800	T515-400-8	6525154000800	T714-400-8	6527144000800	T715-400-8	6527154000800
	11	196,883	136,0	-	165,1	T514-400-11	6525144001100	T515-400-11	6525154001100	T714-400-11	6527144001100	T715-400-11	6527154001100
500	8	139,731	136,0	171,4	-	T514-500-8	6525145000800	T515-500-8	6525155000800	T714-500-8	6527145000800	T715-500-8	6527155000800
	11	196,883	190,0	235,0	-	T514-500-11	6525145001100	T515-500-11	6525155001100	T714-500-11	6527145001100	T715-500-11	6527155001100
630	11	196,883	252,0	235,0	-	T514-630-11	6525146301100	T515-630-11	6525156301100	T714-630-11	6527146301100	T715-630-11	6527156301100
	15	285,791	190,0	330,2	-	T514-630-15	6525146301500	T515-630-15	6525156301500	T714-630-15	6527146301500	T715-630-15	6527156301500
800	11	196,883	192,8	235,0	-	T514-800-11	6525148001100	T515-800-11	6525158001100	T714-800-11	6527148001100	T715-800-11	6527158001100
	15	285,791	281,4	330,2	-	T514-800-15	6525148001500	T515-800-15	6525158001500	T714-800-15	6527148001500	T715-800-15	6527158001500

Example of denotation lathe chucks accuracy class:
T514-200-5-A – A class lathe chuck accuracy
T514-200-5-I – I class lathe chuck accuracy
T514-200-5 – normal class lathe chuck accuracy

Przykłady określenia uchwyty w zależności od klasy dokładności:
T514-200-5-A – uchwyt w klasie dokładności A
T514-200-5-I – uchwyt w klasie dokładności I
T514-200-5 – uchwyt w klasie dokładności normal

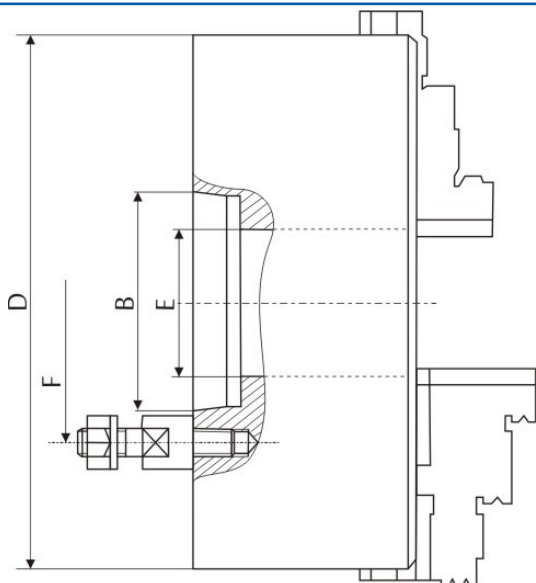
Accuracy class by
Page III data

Klasa dokładności
wg danych
na Stronie III

DIN 55027

T534 T535

T734 T735



3-jaws and 4-jaws, self-centering steel body scroll chucks with **DIN 55027** type **C** mounting

Uchwyty samocentrujące 3 i 4-szczękowe stalowe z mocowaniem typu **C** wg **DIN 55027**

T514 and/i T714
solid jaws/ szczęki jednolite

T515 and/i T715
2-pieces jaws/szczęki dzielone

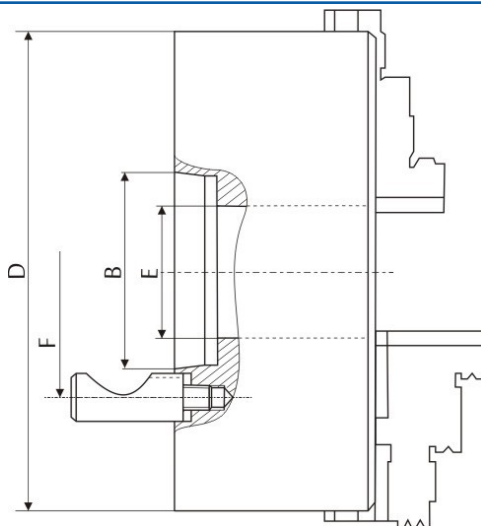
D	Common dimensions Wymiary wspólne				3-jaws/ 3-szczękowe				4-jaws/4-szczękowe			
					T534 solid jaws/ szczęki jednolite		T535 2-pieces jaws/ szczęki dzielone		T734 solid jaws/ szczęki jednolite		T735 2-pieces jaws/ szczęki dzielone	
	Taper No Nr st.	B	E	F	Type	Code	Type	Code	Type	Code	Type	Code
125	3	53,983	32,0	75,0	T534-125-3	6525341250300	T535-125-3	6525351250300	T734-125-3	6527341250300	T735-125-3	6527351250300
	4	63,521	32,0	85,0	T534-125-4	6525341250400	T535-125-4	6525351250400	T734-125-4	6527341250400	T735-125-4	6527351250400
160	4	63,521	42,0	85,0	T534-160-4	6525341600400	T535-160-4	6525351600400	T734-160-4	6527341600400	T735-160-4	6527351600400
	5	82,573	42,0	104,8	T534-160-5	6525341600500	T535-160-5	6525351600500	T734-160-5	6527341600500	T735-160-5	6527351600500
200	5	82,573	55,0	104,8	T534-200-5	6525342000500	T535-200-5	6525352000500	T734-200-5	6527342000500	T735-200-5	6527352000500
	6	106,385	55,0	133,4	T534-200-6	6525342000600	T535-200-6	6525352000600	T734-200-6	6527342000600	T735-200-6	6527352000600
250	6	106,385	76,0	133,4	T534-250-6	6525342500600	T535-250-6	6525352500600	T734-250-6	6527342500600	T735-250-6	6527352500600
	8	139,731	76,0	171,4	T534-250-8	6525342500800	T535-250-8	6525352500800	T734-250-8	6527342500800	T735-250-8	6527352500800
315	6	106,385	103,0	133,4	T534-315-6	6525343150600	T535-315-6	6525353150600	T734-315-6	6527343150600	T735-315-6	6527353150600
	8	139,731	103,0	171,4	T534-315-8	6525343150800	T535-315-8	6525353150800	T734-315-8	6527343150800	T735-315-8	6527353150800
	11	196,883	103,0	235,0	T534-315-11	6525343151100	T535-315-11	6525353151100	T734-315-11	6527343151100	T735-315-11	6527353151100
400	8	139,731	136,0	171,4	T534-400-8	6525344000800	T535-400-8	6525354000800	T734-400-8	6527344000800	T735-400-8	6527354000800
	11	196,883	136,0	235,0	T534-400-11	6525344001100	T535-400-11	6525354001100	T734-400-11	6527344001100	T735-400-11	6527354001100
500	8	139,731	136,0	171,4	T534-500-8	6525345000800	T535-500-8	6525355000800	T734-500-8	6527345000800	T735-500-8	6527355000800
	11	196,883	190,0	235,0	T534-500-11	6525345001100	T535-500-11	6525355001100	T734-500-11	6527345001100	T735-500-11	6527355001100
630	11	196,883	190,0	235,0	T534-630-11	6525346301100	T535-630-11	6525356301100	T734-630-11	6527346301100	T735-630-11	6527356301100
	15	285,791	252,0	330,2	T534-630-15	6525346301500	T535-630-15	6525356301500	T734-630-15	6527346301500	T735-630-15	6527356301500
800	11	196,883	192,8	235,0	T534-800-11	6525348001100	T535-800-11	6525358001100	T734-800-11	6527348001100	T735-800-11	6527358001100
	15	285,791	281,4	330,2	T534-800-15	6525348001500	T535-800-15	6525358001500	T734-800-15	6527348001500	T735-800-15	6527358001500

Example of denotation lathe chucks accuracy class:
 T534-200-5-A – A class lathe chuck accuracy
 T534-200-5-I – I class lathe chuck accuracy
 T534-200-5 – normal class lathe chuck accuracy

Przykłady określenia uchwyty w zależności od klasy dokładności:
 T534-200-5-A – uchwyt w klasie dokładności A
 T534-200-5-I – uchwyt w klasie dokładności I
 T534-200-5 – uchwyt w klasie dokładności normal

Accuracy class by
Page III data

Klasa dokładności
wg danych
na Stronie III



DIN 55029

T544 T545

T744 T745



3-jaws and 4-jaws, self-centering steel body scroll chucks with **DIN 55029** type **D** mounting

Uchwyty samocentrujące 3 i 4-szczękowe stalowe z mocowaniem typu **D** wg **DIN 55029**



T544 and/i T744
solid jaws/ szczęki jednolite

T545 and/i T745
2-pieces jaws/szczęki dzielone

D	Common dimensions Wymiary wspólne				3-jaws/ 3-szczękowe				4-jaws/4-szczękowe			
					T544 solid jaws/szczęki jednolite		T545 2-pieces jaws/szczęki dzielone		T744 solid jaws/szczęki jednolite		T745 2-pieces jaws/szczęki dzielone	
	Taper No Nr st.	B	E	F	Type	Code	Type	Code	Type	Code	Type	Code
125	3	53,983	32,0	70,6	T544-125-3	6525441250300	T545-125-3	6525451250300	T744-125-3	6527441250300	T745-125-3	6527451250300
	4	63,521	32,0	82,6	T544-125-4	6525441250400	T545-125-4	6525451250400	T744-125-4	6527441250400	T745-125-4	6527451250400
160	3	53,983	42,0	70,6	T544-160-3	6525441600300	T545-160-3	6525451600300	T744-160-3	6527441600300	T745-160-3	6527451600300
	4	63,521	42,0	82,6	T544-160-4	6525441600400	T545-160-4	6525451600400	T744-160-4	6527441600400	T745-160-4	6527451600400
	5	82,573	42,0	104,8	T544-160-5	6525441600500	T545-160-5	6525451600500	T744-160-5	6527441600500	T745-160-5	6527451600500
200	4	63,521	55,0	82,6	T544-200-4	6525442000400	T545-200-4	6525452000400	T744-200-4	6527442000400	T745-200-4	6527452000400
	5	82,573	55,0	104,8	T544-200-5	6525442000500	T545-200-5	6525452000500	T744-200-5	6527442000500	T745-200-5	6527452000500
	6	106,385	55,0	133,4	T544-200-6	6525442000600	T545-200-6	6525452000600	T744-200-6	6527442000600	T745-200-6	6527452000600
250	6	106,385	76,0	133,4	T544-250-6	6525442500600	T545-250-6	6525452500600	T744-250-6	6527442500600	T745-250-6	6527452500600
	8	139,731	76,0	171,4	T544-250-8	6525442500800	T545-250-8	6525452500800	T744-250-8	6527442500800	T745-250-8	6527452500800
315	6	106,385	103,0	133,4	T544-315-6	6525443150600	T545-315-6	6525453150600	T744-315-6	6527443150600	T745-315-6	6527453150600
	8	139,731	103,0	171,4	T544-315-8	6525443150800	T545-315-8	6525453150800	T744-315-8	6527443150800	T745-315-8	6527453150800
	11	196,883	103,0	235,0	T544-315-11	6525443151100	T545-315-11	6525453151100	T744-315-11	6527443151100	T745-315-11	6527453151100
400	8	139,731	136,0	171,4	T544-400-8	6525444000800	T545-400-8	6525454000800	T744-400-8	6527444000800	T745-400-8	6527454000800
	11	196,883	136,0	235,0	T544-400-11	6525444001100	T545-400-11	6525454001100	T744-400-11	6527444001100	T745-400-11	6527454001100
500	8	139,731	136,0	171,4	T544-500-8	6525445000800	T545-500-8	6525455000800	T744-500-8	6527445000800	T745-500-8	6527455000800
	11	196,883	190,0	235,0	T544-500-11	6525445001100	T545-500-11	6525455001100	T744-500-11	6527445001100	T745-500-11	6527455001100
630	11	196,883	190,0	235,0	T544-630-11	6525446301100	T545-630-11	6525456301100	T744-630-11	6527446301100	T745-630-11	6527456301100
	15	285,791	252,0	330,2	T544-630-15	6525446301500	T545-630-15	6525456301500	T744-630-15	6527446301500	T745-630-15	6527456301500
800	11	196,883	192,8	235,0	T544-800-11	6525448001100	T545-800-11	6525458001100	T744-800-11	6527448001100	T745-800-11	6527458001100
	15	285,791	281,4	330,2	T544-800-15	6525448001500	T545-800-15	6525458001500	T744-800-15	6527448001500	T745-800-15	6527458001500

Example of denotation lathe chucks accuracy class:
T544-200-5-A – A class lathe chuck accuracy
T544-200-5-I – I class lathe chuck accuracy
T544-200-5 – normal class lathe chuck accuracy

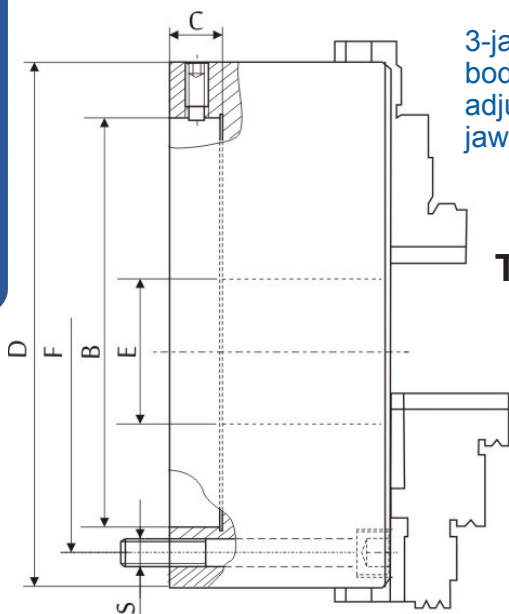
Przykłady określenia uchwytu w zależności od klasy dokładności:
T544-200-5-A – uchwyt w klasie dokładności A
T544-200-5-I – uchwyt w klasie dokładności I
T544-200-5 – uchwyt w klasie dokładności normal

Accuracy class by
Page III data

Klasa dokładności
wg danych
na Stronie III

Fine adjustment mounting
Regulowane osadzenie

T564T565



3-jaws, self-centering steel body scroll chucks with fine adjustment mounting, with jaws:

Uchwyty samocentrujące 3-szczękowe stalowe z regulowanym osadzeniem ze szczękami:

T564 – solid jaws/jednolitymi;

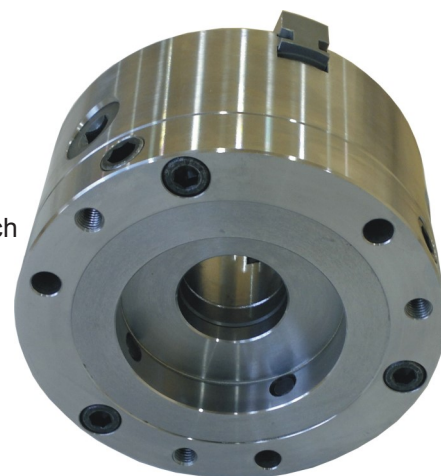
T565 – 2-pieces jaws/dzielonymi;



D	Common dimensions Wymiary wspólne					T564 solid jaws/szczęki jednolite		T565 2-pieces jaws/szczęki dzielone	
	B	C	E	F	S	Type	Code	Type	Code
100	45,000	13	20	83,0	3xM8	T564-100	6525641000100	----	----
125	55,000	15	35	108,0	3xM8	T564-125	6525641250100	T565-125	6525651250100
160	86,000	18	42	140,0	3xM10	T564-160	6525641600100	T565-160	6525651600100
200	110,000	20	55	176,0	3xM10	T564-200	6525642000100	T565-200	6525652000100
250	145,000	20	76	224,0	3xM12	T564-250	6525642500100	T565-250	6525652500100
315	180,000	20	103	286,0	3xM16	T564-315	6525643150100	T565-315	6525653150100
400	299,237	22	136	171,5	6xM16	T564-400	6525644000100	T565-400	6525654000100
500	407,160	30	190	235,0	6xM20	T564-500	6525645000100	T565-500	6525655000100
630	407,160	30	252	330,2	6xM20	T564-630	6525646300100	T565-630	6525656300100
800	635,000	34	320	368,3	6xM24	T564-800	6525648000100	T565-800	6525658000100

- The clamped workpiece is adjusted to the required concentricity by means of 4 for sizes up to 315 mm (8 for sizes up to 800 mm) radially arranged adjusting screws
- Mounting require original fine adjustment adapter plates (page 16).

- Regulacja ustawienia przedmiotu z uchwytem do żądanej dokładności bicia promieniowego odbywa się przy pomocy 4 (dla uchwytów do 315 mm), lub 8 (w uchwytach o średnicy od 400 mm) promieniowych wkrętów regulacyjnych.
- Mocowanie uchwyty na wrzecionie obrabiarki wymaga odpowiedniej tarczy zabierakowej (str. 16).



Fabryka Narzędzi POREBA Sp. z o.o.

Manual lathe chucks JAWS — SZCZĘKI uchwytów manualnych



SJZ
Hard outside solid jaws
Szczęki jednolite twarde
zewnętrzne

D mm	For 3-jaws chucks type T500		For 4-jaws chucks type T700	
	Type	Code	Type	Code
100	SJZ-100	6525041003400	SJZ-100 T7	6527001003400
125	SJZ-125	6525041253400	SJZ-125 T7	6527001254400
160	SJZ-160	6525041603400	SJZ-160 T7	6527001604400
200	SJZ-200	6525042003400	SJZ-200 T7	6527002004400
250	SJZ-250	6525042503400	SJZ-250 T7	6527002504400
315	SJZ-315	6525043153400	SJZ-315 T7	6527003154400
400	SJZ-400	6525044003400	SJZ-400 T7	6527004004400
500	SJZ-500	6525045003400	SJZ-500 T7	6527005004400
630 800	SJZ-630 800	6525046303400	SJZ-630 T7	6527006304400



SJW
Hard inside solid jaws
Szczęki jednolite twarde
wewnętrzne

D mm	For 3-jaws chucks type T500		For 4-jaws chucks type T700	
	Type	Code	Type	Code
100	SJW-100	6525041003500	SJW-100 T7	6527001003500
125	SJW-125	6525041253500	SJW-125 T7	6527001254500
160	SJW-160	6525041603500	SJW-160 T7	6527001604500
200	SJW-200	6525042003500	SJW-200 T7	6527002004500
250	SJW-250	6525042503500	SJW-250 T7	6527002504500
315	SJW-315	6525043153500	SJW-315 T7	6527003154500
400	SJW-400	6525044003500	SJW-400 T7	6527004004500
500	SJW-500	6525045003500	SJW-500 T7	6527005004500
630 800	SJW-630 800	6525046303500	SJW-630 T7	6527006304500



SJM
Soft solid jaws
Szczęki jednolite miękkie

D mm	For 3-jaws chucks type T500		For 4-jaws chucks type T700	
	Type	Code	Type	Code
100	SJM-100	6525041003600	SJM-100 T7	6527001003600
125	SJM-125	6525041253600	SJM-125 T7	6527001254600
160	SJM-160	6525041603600	SJM-160 T7	6527001604600
200	SJM-200	6525042003600	SJM-200 T7	6527002004600
250	SJM-250	6525042503600	SJM-250 T7	6527002504600
315	SJM-315	6525043153600	SJM-315 T7	6527003154600
400	SJM-400	6525044003600	SJM-400 T7	6527004004600
500	SJM-500	6525045003600	SJM-500 T7	6527005004600
630 800	SJM-630 800	6525046303600	SJM-630 T7	6527006304600



SP
Hard master jaws
Szczęki podstawowe

D mm	For 3-jaws chucks type T500		For 4-jaws chucks type T700	
	Type	Code	Type	Code
125	SP-125	6525041253700	SP-125 T7	6527001254700
160	SP-160	6525041603700	SP-160 T7	6527001604700
200	SP-200	6525042003700	SP-200 T7	6527002004700
250	SP-250	6525042503700	SP-250 T7	6527002504700
315	SP-315	6525043153700	SP-315 T7	6527003154700
400	SP-400	6525044003700	SP-400 T7	6527004004700
500	SP-500	6525045003700	SP-500 T7	6527005004700
630	SP-630	6525046303700	SP-630 T7	6527006304700
800	SP-800	6525048003700	SP-800 T7	6527008004700



SGT
Hard top jaws
Szczęki górne twarde

D mm	For 3-jaws chucks type T500		For 4-jaws chucks type T700	
	Type	Code	Type	Code
125	SGT-125	6525041258200	SGT-125 T7	6527001258400
160	SGT-160	6525041608200	SGT-160 T7	6527001608400
200	SGT-200	6525042008200	SGT-200 T7	6527002008400
250	SGT-250	6525042508200	SGT-250 T7	6527002508400
315	SGT-315	6525043158200	SGT-315 T7	6527003158400
400	SGT-400	6525044008200	SGT-400 T7	6527004008400
500	SGT-500	6525045008200	SGT-500 T7	6527005008400
630 800	SGT-630 800	6525046308200	SGT-630 T7	6527006308400



SGM
Soft top jaws
Szczęki górne miękkie

D mm	For 3-jaws chucks type T500		For 4-jaws chucks type T700	
	Type	Code	Type	Code
125	SGM-125	6525041258300	SGM-125 T7	6527001258100
160	SGM-160	6525041608300	SGM-160 T7	6527001608100
200	SGM-200	6525042008300	SGM-200 T7	6527002008100
250	SGM-250	6525042508300	SGM-250 T7	6527002508100
315	SGM-315	6525043158300	SGM-315 T7	6527003158100
400	SGM-400	6525044008300	SGM-400 T7	6527004008100
500	SGM-500	6525045008300	SGM-500 T7	6527005008100
630 800	SGM-630 800	6525046308300	SGM-630 T7	6527006308100



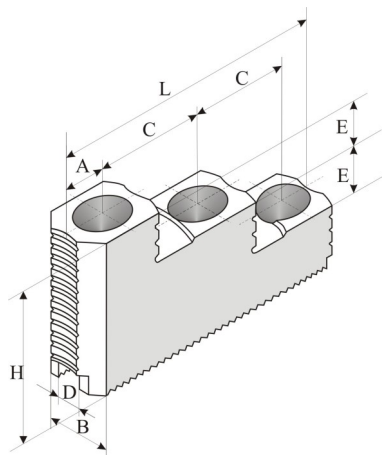
SDT
Hard 2-piece reversible jaws
Szczęki dzielone twarde

D mm	For 3-jaws chucks type T500		For 4-jaws chucks type T700	
	Type	Code	Type	Code
125	SDT-125	6525041251200	SDT-125 T7	6527001251400
160	SDT-160	6525041601200	SDT-160 T7	6527001601400
200	SDT-200	6525042001200	SDT-200 T7	6527002001400
250	SDT-250	6525042501200	SDT-250 T7	6527002501400
315	SDT-315	6525043151200	SDT-315 T7	6527003151400
400	SDT-400	6525044001200	SDT-400 T7	6527004001400
500	SDT-500	6525045001200	SDT-500 T7	6527005001400
630	SDT-630	6525046301200	SDT-630 T7	6527006301400
800	SDT-800	6525048001200	SDT-800 T7	6527008001400



SDM
Soft 2-piece jaws
Szczęki dzielone miękkie

D mm	For 3-jaws chucks type T500		For 4-jaws chucks type T700	
	Type	Code	Type	Code
125	SDM-125	6525041251300	SDM-125 T7	6527001251700
160	SDM-160	6525041601300	SDM-160 T7	6527001601700
200	SDM-200	6525042001300	SDM-200 T7	6527002001700
250	SDM-250	6525042501300	SDM-250 T7	6527002501700
315	SDM-315	6525043151300	SDM-315 T7	6527003151700
400	SDM-400	6525044001300	SDM-400 T7	6527004001700
500	SDM-500	6525045001300	SDM-500 T7	6527005001700
630	SDM-630	6525046301300	SDM-630 T7	6527006301700
800	SDM-800	6525048001300	SDM-800 T7	6527008001700



Serration
1,5 x 60° or 3,0 x 60°

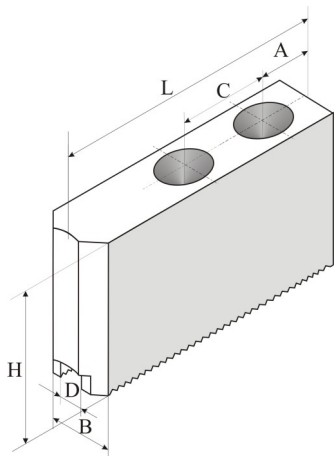
SGTM



Hard top reversible jaws for power chucks with metric serration **1,5x60°** or **1,5x60°**

Szczęki górne twarde odwracalne do uchwytów mechanicznych z uzębieniem metrycznym **1,5x60°** lub **3,0x60°**

D mm	Dimensions Wymiary mm										Hard jaws Szczęki twarde	
	A	B	C	C1	D	E	E1	L	H	Serration	Type	Code
135	13	23	14	14	10H7	10	10	53	36	1,5x60°	SGTM-135K	6524051359200
160	12,5	32	20	20	12H7	10	10	65	43	1,5x60°	SGTM-160K	6524051609200
200	14,5	35	25	25	14H7	12	12	79	49	1,5x60°	SGTM-200K	6524052009200
250	19	40	30	30	16H7	14	14	100	54	1,5x60°	SGTM-250K	6524052509200
315	21	45	30	30	21H7	14	14	101	58	1,5x60°	SGTM-315K	6524053159200
400	27	50	43	43	25,5H7	18	18	140	75	1,5x60°	SGTM-400K	6524054009200
500	27	50	43	43	25H7	18	18	141	75	3,0x60°	SGTM-500K	6524055009200
630	25	55	43	43	25H7	28	28	136	70	3,0x60°	SGTM-630K	6524056309200
800	25	55	43	—	25H7	28	—	136	70	3,0x60°	SGTM-800K	6524058009200



Serration
1,5 x 60° or 3,0 x 60°

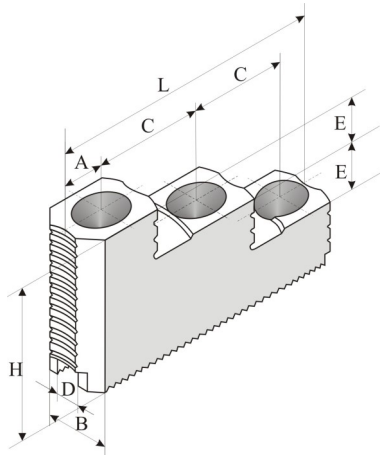
SGMM



Soft top jaws for power chucks with metric serration **1,5x60°** or **3,0x60°**

Szczęki górne miękkie do uchwytów mechanicznych z uzębieniem metrycznym **1,5x60°** lub **3,0x60°**

D mm	Dimensions Wymiary mm							Soft jaws Szczęki miękkie	
	A	B	C	D	L	H	Serration	Type	Code
135	12	23	14	10H7	54	25	1,5x60°	SGMM-135K	6524051359300
160	12	26	20	12H7	66	28	1,5x60°	SGMM-160K	6524051609300
200	24	35	25	14H7	95	38	1,5x60°	SGMM-200K	6524052009300
250	30	39	30	16H7	110	42	1,5x60°	SGMM-250K	6524052509300
315	21	50	30	21H7	111	50	1,5x60°	SGMM-315K	6524053159300
400	26	60	43	25,5H7	140	60	1,5x60°	SGMM-400K	6524054009300
500	26	60	43	25H7	140	60	3,0x60°	SGMM-500K	6524055009300
630	27	70	43	25H7	170	70	3,0x60°	SGMM-630K	6524056309300
800	27	70	43	25H7	170	70	3,0x60°	SGMM-800K	6524058009300



Serration
1/16" x 90° or 3/32" x 90°

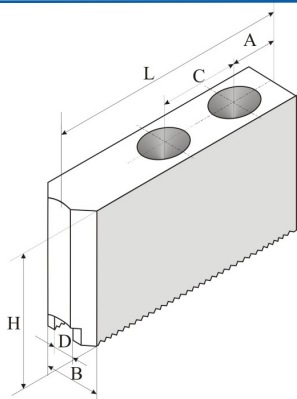
SGTM

Hard top reversible jaws for power chucks with inch serration 1/16"x90° or 3/32"x90°



Szczęki górne twarde odwracalne do uchwytów mechanicznych z uzębieniem calowym 1/16"x90° lub 3/32"x90°

D mm	Dimensions Wymiary mm										Hard jaws Szczęki twarde	
	A	B	C	C1	D	E	E1	L	H	Serration	Type	Code
125	13	30	16	16	12H7	8,5	8,5	58	34	1/16"x90°	SGTM-135A	6524051259220
165	14	34	16,5	16,5	14H7	10	10	65	39	1/16"x90°	SGTM-160A	6524051659220
210	17	40	23	23	17H7	10,5	10,5	82	45	1/16"x90°	SGTM-200A	6524052109220
250	19	45	30	30	21H7	13,5	13,5	105	56	1/16"x90°	SGTM-250A	6524052509220
315	19	50	30	30	21H7	13,5	13,5	123	56	1/16"x90°	SGTM-315A	6524053159220
400 500	26	60	38	38	25,5H7	19	19	140	75	3/32"x90°	SGTM-400A	6524054009220
630 800	23	70	38	—	25,5H7	32	—	145	75	3/32"x90°	SGTM-800A	6524056309220



Serration
1/16" x 90° or 3/32" x 90°

SGMM

Soft top jaws for power chucks with inch serration 1/16"x90° or 3/32"x90°

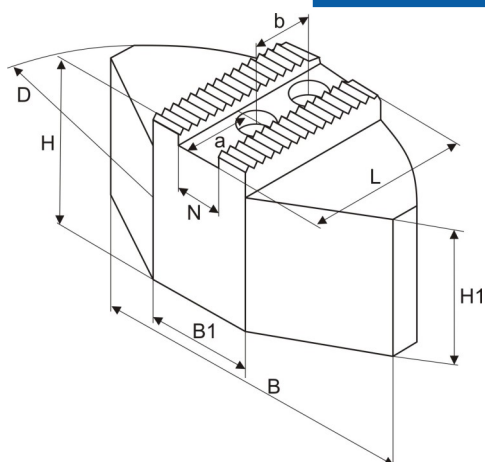


Szczęki górne miękkie do uchwytów mechanicznych z uzębieniem calowym 1/16"x90° lub 3/32"x90°

D mm	Dimensions Wymiary mm							Soft jaws Szczęki miękkie	
	A	B	C	DH7	L	H	Serration	Type	Note
125	15	30	16	12	60	30; 40; 60	1/16"x90°	SGMM-125A-60xH	
165	16	35	16,5	14	70	35; 60; 80	1/16"x90°	SGMM-165A-70xH	
210 up to 260	20	40	23	17	70	40; 60	1/16"x90°	SGMM-210A-70xH	
	20	40	23	17	90	40; 60; 80; 100; 120	1/16"x90°	SGMM-210A-90xH	
	20	40	23	17	105	40; 60; 80; 100	1/16"x90°	SGMM-210A-105xH	
250 up to 315	20	45	30	17	90	45; 80	1/16"x90°	SGMM-315A-90xH	
	20	45	30	21	110	45	1/16"x90°	SGMM-315A-110x45	
	20	50	30	21	110	80; 100; 120	1/16"x90°	SGMM-315A-110xH	
	22	50	30	21	125	50; 80; 100; 120	1/16"x90°	SGMM-315A-125xH	
	30	50	30	21	140	60; 80	1/16"x90°	SGMM-315A-140xH	
	30	50	30	21	155	50	1/16"x90°	SGMM-315A-155x50	
500 up to 800	30	60	35	25,5	160	80; 100	3/32"x90°	SGMM-400-160xH	
	27	60	38	25,5	140	60; 80; 100	3/32"x90°	SGMM-500-140xH	
	80	80	38	25,5	160	80; 100	3/32"x90°	SGMM-500-160xH	
	60	60	38	25,5	170	60; 80; 100	3/32"x90°	SGMM-500-170xH	
	75	75	65	30	240	90	3/32"x90°	SGMM-500-240x90	
	75	75	65	30	300	90	3/32"x90°	SGMM-500-300x90	

Metric Serration
1,5 x 60° or 3,0 x 60°

Inch Serration
1/16" x 90° or 3/32" x 90°



Soft full grip jaws for power chucks with fine serration:

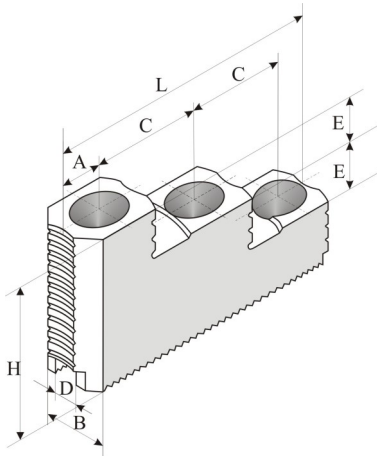
- metric 1,5x60° or 3,0x60°
- inch 1/16"x90° or 3/32"x90°

Szczęki górne miękkie z pełnym chwytem do uchwytów mechanicznych z uzębieniem:

- metrycznym 1,5x60° lub 3,0x60°
- calowym 1/16"x90° lub 3/32"x90°

D mm	Dimensions Wymiary mm										Soft jaws Szczęki miękkie
	N	B	H	L	D	B1	H1	a	b	Serration	Type
160 up to 315	12	120	50	60	160	50	40	25	20	1,5x60°	SGMM-MS-160-01
	14	140	60	70	200	70	50	30	25	1,5x60°	SGMM-MS-200-01
	14	140	80	70	200	70	70	30	25	1,5x60°	SGMM-MS-200-02
	16	180	60	80	250	100	45	30	30	1,5x60°	SGMM-MS-250-01
	16	180	80	80	250	100	70	30	30	1,5x60°	SGMM-MS-250-02
	18	240	70	110	300	120	55	40	30	1,5x60°	SGMM-MS-315-01
	21	240	70	110	300	120	55	45	30	1,5x60°	SGMM-MS-315-02
130 up to 315	10	100	40	50	130	35	35	15	12+12	1/16"x90°	SGMM-CS-130-01
	12	120	60	60	160	40	50	20	15+15	1/16"x90°	SGMM-CS-160-01
	12	120	60	60	175	50	50	24	21	1/16"x90°	SGMM-CS-200-01
	14	120	60	60	160	40	50	25	20	1/16"x90°	SGMM-CS-160-02
	16	180	60	80	250	80	50	33	29	1/16"x90°	SGMM-CS-250-01
	17	120	60	60	160	40	50	25	22	1/16"x90°	SGMM-CS-160-03
	17	140	60	70	200	50	50	36	19	1/16"x90°	SGMM-CS-200-02
	17	140	60	70	200	64	50	35	22	1/16"x90°	SGMM-CS-200-03
	17	140	75	70	200	64	65	35	22	1/16"x90°	SGMM-CS-200-04
	17	180	60	80	250	104	45	45	22	1/16"x90°	SGMM-CS-250-02
	21	180	70	80	250	104	55	30	28	1/16"x90°	SGMM-CS-250-03
	21	180	100	80	250	104	85	30	28	1/16"x90°	SGMM-CS-250-04
21	240	70	110	320	120	55	60	28	1/16"x90°	SGMM-CS-315-01	
400	25,5	330	98	160	440	150	68	85	35	3/32"x90°	SGMM-CS-400-01

SGTM



Hard top reversible jaws for power chucks with:

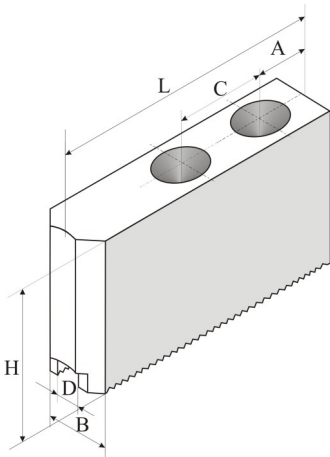
- metric serration **1,5x60°** or **3,0x60°**
- inch serration **1/16"x90°** or **3/32"x90°**

Szczęki górne twarde odwracalne do uchwytów mechanicznych z uzębieniem:

- metrycznym **1,5x60°** lub **3,0x60°**
- calowym **1/16"x90°** lub **3/32"x90°**

Chucks Size Range mm		Range of Dimensions Zakres Wymiarowy mm						Hard jaws Szczęki twarde	
		L		B		H		Serration	
135	400	53	149	23	60	27,5	86	1,5x60°	
400	800	140	160	60	80	75	90	3,0x60°	
125	350	58	145	30	70	34	75	1/16"x90°	
400	800	140	145	60	70	75	75	3/32"x90°	

SGMM



Soft top jaws for power chucks with:


- metric serration **1,5x60°** or **3,0x60°**
- inch serration **1/16"x90°** or **3/32"x90°**


Szczęki górne miękkie do uchwytów mechanicznych z uzębieniem:


- metrycznym **1,5x60°** lub **3,0x60°**
- calowym **1/16"x90°** lub **3/32"x90°**


Chucks Size Range mm		Range of Dimensions Zakres Wymiarowy mm						Soft top jaws Szczęki twarde	
		L		B		H		Serration	
100	400	50	165	25	60	25	140	1,5x60°	
400	630	95	250	35	70	35	120	3,0x60°	
110	315	55	155	25	60	30	120	1/16"x90°	
400	800	140	300	60	80	60	120	3/32"x90°	


SPARE PARTS CZĘŚCI ZAMIENNE

	KZA	Stud for Camlock DIN 55029 Kolek zabierakowy Camlock	
	Taper No Nr stożka	Type	Code
	3	KZA M10x1-35	6520711013500
	4	KZA M10x1-37	6520711205000
	5	KZA M12x1-43	6520711214300
	6	KZA M16x1,5-49	6520711615490
	8	KZA M20x1,5-55,5	6520712015550
	11	KZA M22x1,5-67	6520712215670
	15	KZA M24x1,5-76	6520712415760
20	KZA M27x2-89	6520712728900	

	TMO	Stud and locknut DIN 55027 Trzpień mocujący typu C	
	Taper No Nr stożka	Type	Code
	3	TMO M10 C3	6520711005800
	4	TMO M10 C4	6520711003900
	5	TMO M10 C5	6520711004300
	6	TMO M12 C6	6520711205000
	8	TMO M16 C8	6520711606000
	11	TMO M20 C11	6520712007500
	15	TMO M24 C15	6520712409000

	TS	Scroll plate Tarcza spiralna	
	D mm	Type	Code
	100	TS-100	6525041005600
	125	TS-125	6525041255600
	160	TS-160	6525041605600
	200	TS-200	6525042005600
	250	TS-250	6525042505600
	315	TS-315	6525043155600
	400	TS-400	6525044005600

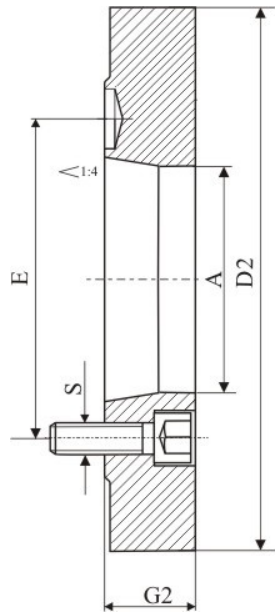
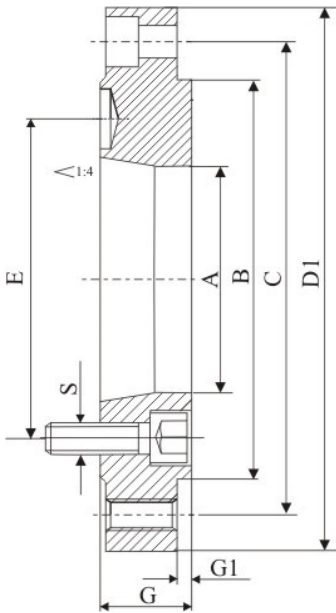
	KZ	Pinion Kółko zębate	
	D mm	Type	Code
	100	KZ-100	6525041005800
	125	KZ-125	6525041255800
	160	KZ-160	6525041605800
	200	KZ-200	6525042005800
	250	KZ-250	6525042505800
	315	KZ-315	6525043155800
	400	KZ-400	6525044005800

	KL	Safety wrench Klucz uchwyty	
	D mm	Type	Code
	100	KL-100 125	6520720907600
	125		
	160	KL-160 200	6520721109500
	200		
	250	KL-250 315	6520721412000
	315		
	400	KL-400	6520721714000

TZ210

TZ212

DIN 55026



Adapter plates with **DIN 55026 type A** mounting:

TZ210 – fully machined
TZ212 – semi machined

Tarcza zabierakowa stalowa z chwytem **typu A wg DIN 55026**:

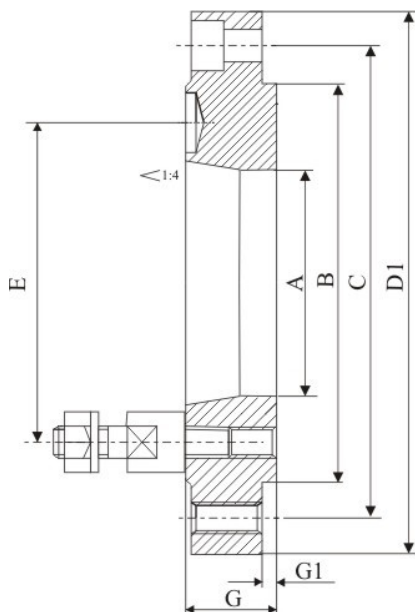
TZ210 – całkowicie obrobiona
TZ212 – częściowo obrobiona

D	Common dimensions Wymiary wspólne				TZ210							TZ212			
	Taper No Nr st.	A	E	S	Type	Code	Bh4	C	D1	G	G1	Type	Code	D2	G2
100	3	51,4	70,6	3xM10	TZ210-100-3	6522101000300	70	83	100	22	2,5	TZ212-100-3	6522121000300	102	18
125	3	51,4	70,6	3xM10	TZ210-125-3	6522101250300	95	108	125		TZ212-125-3	6522121250300	127	19,5	
	4	60,9	82,6	3xM10	TZ210-125-4	6522101250400				TZ212-125-4	6522121250400	19,5			
160	3	51,4	70,6	3xM10	TZ210-160-3	6522101600300	125	140	160	3,5	TZ212-160-3	6522121600300	162	19,5	
	4	60,9	82,6	6xM10	TZ210-160-4	6522101600400					TZ212-160-4	6522121600400		24	
	5	79,5	104,8	6xM10	TZ210-160-5	6522101600500					TZ212-160-5	6522121600500		24	
	6	103,0	133,4	3xM12	TZ210-160-6	6522101600600					TZ212-160-6	6522121600600		24	
200	4	60,9	82,6	6xM10	TZ210-200-4	6522102000400	160	176	200	4,5	TZ212-200-4	6522122000400	203	24	
	5	79,5	104,8	6xM10	TZ210-200-5	6522102000500					TZ212-200-5	6522122000500		38	
	6	103	133,4	6xM12	TZ210-200-6	6522102000600					TZ212-200-6	6522122000600		33	
250	5	79,5	104,8	6xM10	TZ210-250-5	6522102500500	200	224	250	28	4,5	TZ212-250-5	6522122500500	253	33
	6	103,0	133,4	6xM12	TZ210-250-6	6522102500600						TZ212-250-6	6522122500600		50
	8	136,1	171,4	6xM16	TZ210-250-8	6522102500800						TZ212-250-8	6522122500800		46
315	6	103,0	133,4	6xM12	TZ210-315-6	6522103150600	260	286	315	33	4,5	TZ212-315-6	6522123150600	318	33
	8	136,1	171,4	6xM16	TZ210-315-8	6522103150800						TZ212-315-8	6522123150800		55
	11	192,8	235,0	6xM20	TZ210-315-11	6522103151100						TZ212-315-11	6522123151100		55
400	6	103,0	133,4	6xM12	TZ210-400-6	6522104000600	330	362	400	36	4,5	TZ212-400-6	6522124000600	405	43
	8	139,1	171,4	6xM16	TZ210-400-8	6522104000800						TZ212-400-8	6522124000800		43
	11	192,8	235,0	6xM20	TZ210-400-11	6522104001100						TZ212-400-11	6522124001100		55
500	8	136,1	171,4	6xM16	TZ210-500-8	6522105000800	420	458	500	48	6,0	TZ212-500-8	6522125000800	505	45
	11	192,8	235,0	6xM20	TZ210-500-11	6522105001100						TZ212-500-11	6522125001100		45
	15	281,4	330,2	6xM24	TZ210-500-15	6522105001500						TZ212-500-15	6522125001500		45
630	8	136,1	171,4	6xM16	TZ210-630-8	6522106300800	545	545	630	42	6,0	TZ212-630-8	6522126300800	635	45
	11	192,8	235,0	6xM20	TZ210-630-11	6522106301100						TZ212-630-11	6522126301100		45
	15	281,4	330,2	6xM24	TZ210-630-15	6522106301500						TZ212-630-15	6522126301500		56
800	11	192,8	235,0	6xM20	TZ210-800-11	6522108001100	450	450	450	45	---	TZ212-800-11	6522128001100	456	43
	15	281,4	330,2	8xM24	TZ210-800-15	6522108001500						TZ212-800-15	6522128001500		43

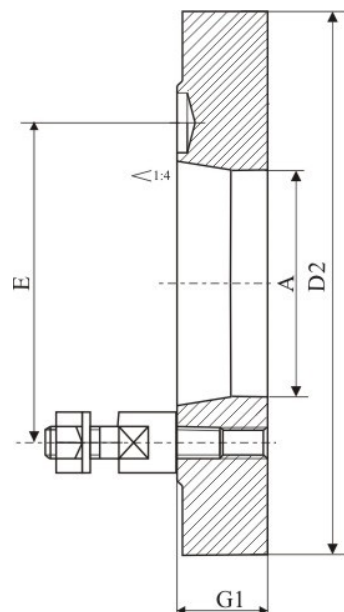
DIN 55027



TZ230



TZ232



Adapter plates with **DIN 55027**
type **C** mounting:
TZ230 – fully machined
TZ232 – semi machined

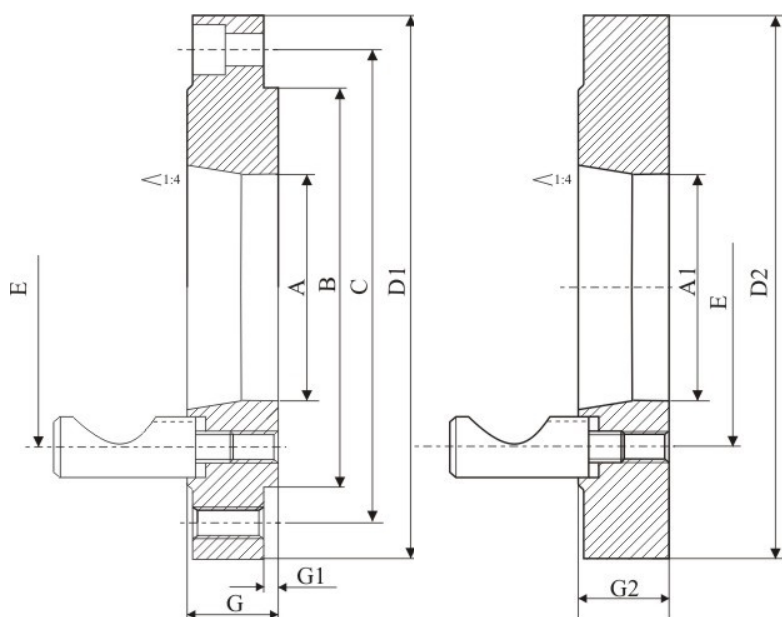
Tarcza zabierakowa stalowa
z chwytem **typu C** wg **DIN 55027**:
TZ230 – całkowicie obrobiona
TZ232 – częściowo obrobiona

D	Common dimensions Wymiary wspólne			TZ230							TZ232							
	Taper No Nr st.	A	E	Type	Code	Bh4	C	D1	G	G1	Type	Code	D2	G2				
100	3	51,4	70,6	TZ230-100-3	6522301000300	70	83	100	22	2,5	TZ232-100-3	6522321000300	102	18				
125	3	51,4	70,3	TZ230-125-3	6522301250300	95	108	125		TZ232-125-3	6522321250300	127	19,5					
	4	60,9	82,6	TZ230-125-4	6522301250400					TZ232-125-4	6522321250400		19,5					
160	3	51,4	70,6	TZ230-160-3	6522301600300	125	140	160		TZ232-160-3	6522321600300	162	19,5					
	4	60,9	82,6	TZ230-160-4	6522301600400					TZ232-160-4	6522321600400		24					
	5	79,5	104,8	TZ230-160-5	6522301600500					TZ232-160-5	6522321600500		24					
	6	103,0	133,4	TZ230-160-6	6522301600600					TZ232-160-6	6522321600600		33					
200	4	60,9	82,6	TZ230-200-4	6522302000400	160	176	200		TZ232-200-4	6522322000400	203	33					
	5	79,5	104,8	TZ230-200-5	6522302000500					TZ232-200-5	6522322000500		38					
	6	103	133,4	TZ230-200-6	6522302000600					TZ232-200-6	6522322000600		33					
250	5	79,5	104,8	TZ230-250-5	6522302500500	200	224	250		28	3,5	TZ232-250-5	6522322500500	253	33			
	6	103,0	133,4	TZ230-250-6	6522302500600							TZ232-250-6	6522322500600		50			
	8	136,1	171,4	TZ230-250-8	6522302500800				TZ232-250-8			6522322500800	46					
315	6	103,0	133,4	TZ230-315-6	6522303150600	260	286	315	33			4,5	TZ232-315-6	6522323150600	318	33		
	8	136,1	171,4	TZ230-315-8	6522303150800								TZ232-315-8	6522323150800		55		
	11	192,8	235,0	TZ230-315-11	6522303151100								TZ232-315-11	6522323151100		47		
400	6	103,0	133,4	TZ230-400-6	6522304000600	330	362	400					36	4,5	TZ232-400-6	6522324000600	405	43
	8	139,1	171,4	TZ230-400-8	6522304000800										TZ232-400-8	6522324000800		43
	11	192,8	235,0	TZ230-400-11	6522304001100										TZ232-400-11	6522324001100		47
500	8	136,1	171,4	TZ230-500-8	6522305000800	420	458	500							TZ232-500-8	6522325000800	505	45
	11	192,8	235,0	TZ230-500-11	6522305001100										TZ232-500-11	6522325001100		45
	15	281,4	330,2	TZ230-500-15	6522305001500										TZ232-500-15	6522325001500		45
630	8	136,1	171,4	TZ230-630-8	6522306300800	545	545	630		42	6,0				TZ232-630-8	6522326300800	635	45
	11	192,8	235,0	TZ230-630-11	6522306301100										TZ232-630-11	6522326301100		45
	15	281,4	330,2	TZ230-630-15	6522306301500										TZ232-630-15	6522326301500		56
800	11	192,8	235,0	TZ230-800-11	6522308001100	450	450	450	45			---			TZ232-800-11	6522328001100	456	43
	15	281,4	330,2	TZ230-800-15	6522308001500										TZ232-800-15	6522328001500		43

TZ240

TZ242

DIN 55029



Adapter plates with **DIN 55029**
type **D** mounting:
TZ240 – fully machined
TZ242 – semi machined

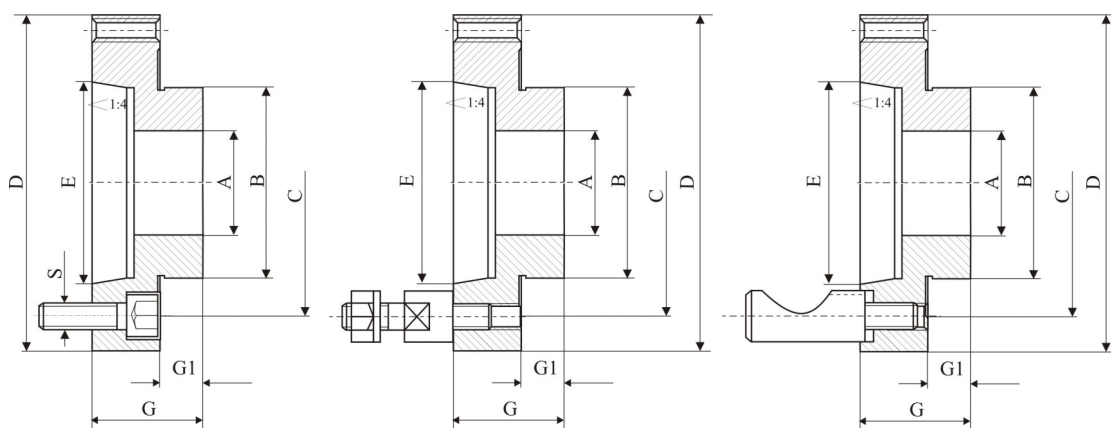
Tarcza zabierakowa stalowa
z chwytem **typu D wg DIN 55029**:
TZ240 – całkowicie obrobiona
TZ242 – częściowo obrobiona

D	Common dimensions Wymiary wspólne		TZ240								TZ242				
	Taper No Nr st.	E	Type	Code	Bh4	C	D1	G	A	G1	Type	Code	A1	D2	G2
100	3	70,6	----	----						2,5	TZ242-100-3	6522421000300	51,4	102	18
125	3	70,6	----	----						3,5	TZ242-125-3	6522421250300	26,0	127	19,5
	4	82,6	TZ240-125-4	6522401250400		108	125	26,0	60,0		TZ242-125-4	6522421250400	26,0		19,5
160	3	70,6	TZ240-160-3	6522401600300	125	140	160	27,0	51,4	3,5	TZ242-160-3	6522421600300	26,0	162	19,5
	4	82,6	TZ240-160-4	6522401600400				27,0	60,0		TZ242-160-4	6522421600400	26,0		24
	5	104,8	TZ240-160-5	6522401600500				30,0	79,5		TZ242-160-5	6522421600500	26,0		24
	6	133,4	TZ240-160-6	6522401600600				36,5	103,0		TZ242-160-6	6522421600600	26,0		33
200	4	82,6	TZ240-200-4	6522402000400	160	176	200	27,0	60,0	3,5	TZ242-200-4	6522422000400	60,9	203	33
	5	104,8	TZ240-200-5	6522402000500				30,0	79,5		TZ242-200-5	6522422000500	55,0		38
	6	133,4	TZ240-200-6	6522402000600				36,5	103,0		TZ242-200-6	6522422000600	55,0		33
250	5	104,8	TZ240-250-5	6522402500500	200	224	250	30,0	79,5	4,5	TZ242-250-5	6522422500500	79,5	253	33
	6	133,4	TZ240-250-6	6522402500600				36,5	103,0		TZ242-250-6	6522422500600	80,0		50
	8	171,4	TZ240-250-8	6522402500800				39,0	136,1		TZ242-250-8	6522422500800	80,0		46
315	6	133,4	TZ240-315-6	6522403150600	260	286	315	39,0	103,0	4,5	TZ242-315-6	6522423150600	103,0	318	33
	8	171,4	TZ240-315-8	6522403150800				39,0	136,0		TZ242-315-8	6522423150800	103,0		55
	11	235,0	TZ240-315-11	6522403151100				47,0	192,8		TZ242-315-11	6522423151100	103,0		47
400	6	133,4	TZ240-400-6	6522404000600	330	362	400	39,0	103,6	4,5	TZ242-400-6	6522424000600	103,0	405	43
	8	171,4	TZ240-400-8	6522404000800				39,0	136,1		TZ242-400-8	6522424000800	136,1		43
	11	235,0	TZ240-400-11	6522404001100				47,0	192,8		TZ242-400-11	6522424001100	136,1		47
500	8	171,4	TZ240-500-8	6522405000800	420	458	500	39,0	136,1	6,0	TZ242-500-8	6522425000800	136,1	505	45
	11	235,0	TZ240-500-11	6522405001100				47,0	192,8		TZ242-500-11	6522425001100	192,8		45
	15	330,2	TZ240-500-15	6522405001500				50,0	192,8		TZ242-500-15	6522425001500	192,8		45
630	8	171,4	TZ240-630-8	6522406301600	545	545	630	47,0	136,1	6,0	TZ242-630-8	6522426300800	136,1	635	45
	11	235,0	TZ240-630-11	6522406301100				47,0	192,8		TZ242-630-11	6522426301100	192,8		45
	15	330,2	TZ240-630-15	6522406301500				50,0	281,4		TZ242-630-15	6522426301500	192,8		56
800	11	235,0	TZ240-800-11	6522408001100	450	450	450	47,0	192,8	---	TZ242-800-11	6522428001100	192,8	456	43
	15	330,2	TZ240-800-15	6522408001500				50,0	281,4		TZ242-800-15	6522428001500	281,4		43

TZ215

TZ235

TZ245



Fully machined adapter plates for chucks with fine adjustment with type of mounting:

Tarcze zabierakowe stalowe do uchwytów z regulowanym osadzeniem:

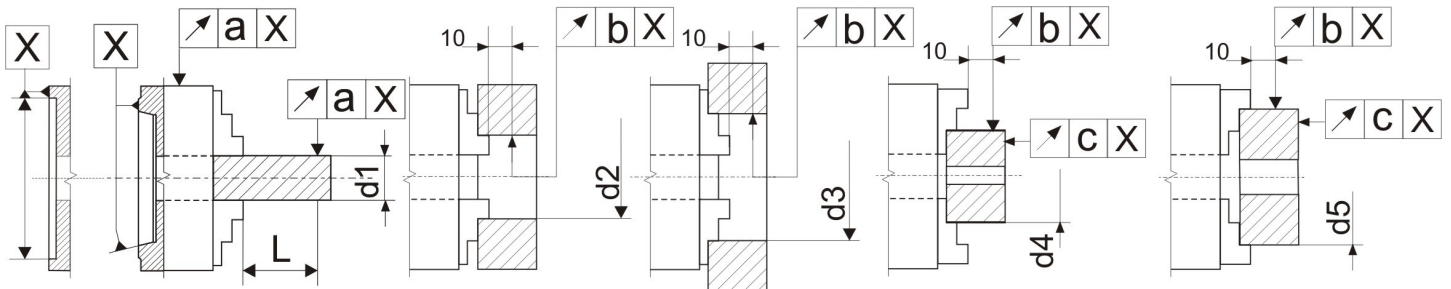
- TZ215 z chwytem typu A wg DIN 55026
- TZ235 z chwytem typu C wg DIN 55027
- TZ244 z chwytem typu D wg DIN 55029

D	Common dimensions Wymiary wspólne						TZ215			TZ235			TZ245			
	Taper No Nr st.	A	B	C	E	G1	Type	Code	G	Type	Code	G	Type	Code	G	
100	3	20,0	45,00	70,6 75,0*	53,975	12	TZ215-100-3	6522151000300	40	TZ235-100-3	6522351000300	31	TZ245-100-3	6522451000300	38	
	4			82,6 85,0*	63,513		TZ215-100-4	6522151000400		TZ235-100-4	6522351000400		TZ245-100-4	6522451000400		40
125	3	35,0	55,00	70,6 75,0*	53,975	14	TZ215-125-3	6522151250300	36	TZ235-125-3	6522351250300	33	TZ245-125-3	6522451250300	40	
	4			82,6 85,0*	63,513		TZ215-125-4	6522151250400		TZ235-125-4	6522351250400		TZ245-125-4	6522451250400		39
	5			104,8	82,563		TZ215-125-5	6522151250500		TZ235-125-5	6522351250500		TZ245-125-5	6522451250500		44
160	3	42,0	86,00	70,6 75,0*	53,975	16	TZ215-160-3	6522151600300	45	TZ235-160-3	6522351600300	32	TZ245-160-3	6522451600300	46	
	4			82,6 85,0*	63,513		TZ215-160-4	6522151600400		TZ235-160-4	6522351600400		TZ245-160-4	6522451600400		
	5			104,8	82,563		TZ215-160-5	6522151600500		TZ235-160-5	6522351600500		TZ245-160-5	6522451600500		
	6			133,4	106,375		TZ215-160-6	6522151600600		TZ235-160-6	6522351600600		TZ245-160-6	6522451600600		51
200	4	55,0	110,00	82,6 85,0*	63,513	17	TZ215-200-4	6522152000400	33	TZ235-200-4	6522352000400	33	TZ245-200-4	6522452000400	33	
	5			104,8	82,563		TZ215-200-5	6522152000500		TZ235-200-5	6522352000500		TZ245-200-5	6522452000500		47
	6			133,4	106,375		TZ215-200-6	6522152000600		TZ235-200-6	6522352000600		TZ245-200-6	6522452000600		51
250	5	76,0	145,00	104,8	82,563	19	TZ215-250-5	6522152500500	38	TZ235-250-5	6522352500500	38	TZ245-250-5	6522452500500	38	
	6			133,4	106,375		TZ215-250-6	6522152500600		TZ235-250-6	6522352500600		TZ245-250-6	6522452500600		53
	8			171,4	139,719		TZ215-250-8	6522152500800		TZ235-250-8	6522352500800		TZ245-250-8	6522452500800		60
315	6	103,0	180,00	133,4	106,375	19	TZ215-315-6	6522153150600	38	TZ235-315-6	6522353150600	43	TZ245-315-6	6522453150600	38	
	8			171,4	139,719		TZ215-315-8	6522153150800		TZ235-315-8	6522353150800		TZ245-315-8	6522453150800		57
	11			235,0	196,869		TZ215-315-11	6522153151100		TZ235-315-11	6522353151100		TZ245-315-11	6522453151100		64
400	6	136,0	298,45	133,4	106,375	---	TZ215-400-6	6522154000600	35	TZ235-400-6	6522354000600	35	TZ245-400-6	6522454000600	35	
	8			171,4	139,719		TZ215-400-8	6522154000800		TZ235-400-8	6522354000800		TZ245-400-8	6522454000800		38
	11			235,0	196,869		TZ215-400-11	6522154001100		TZ235-400-11	6522354001100		TZ245-400-11	6522454001100		48
500	8	136,0	407,00	171,4	139,719	---	TZ215-500-8	6522155000800	36	TZ235-500-8	6522355000800	36	TZ245-500-8	6522455000800	38	
	11			192,8	150,00		TZ215-500-11	6522155001100		TZ235-500-11	6522355001100		TZ245-500-11	6522455001100		44
	15			190,0	150,00		TZ215-500-15	6522155001500		TZ235-500-15	6522355001500		TZ245-500-15	6522455001500		52
630	8	136,0	407,00	171,4	139,719	---	TZ215-630-8	6522156300800	36	TZ235-630-8	6522356300800	36	TZ245-630-8	6522456300800	38	
	11			192,8	150,00		TZ215-630-11	6522156301100		TZ235-630-11	6522356301100		TZ245-630-11	6522456301100		44
	15			252,0	150,00		TZ215-630-15	6522156301500		TZ235-630-15	6522356301500		TZ245-630-15	6522456301500		52
800	11	192,8	635,00	235,0	196,869	---	TZ215-800-11	6522158001100	40	TZ235-800-11	6522358001100	36	TZ245-800-11	6522458001100	44	
	15			281,0	150,00		TZ215-800-15	6522158001500		TZ235-800-15	6522358001500		TZ245-800-15	6522458001500		48,5

*aply/dotyczy TZ235

Centering accuracy for self-centering scroll chucks

Dokładności centrowania uchwytów samocentrujących



		Chuck size Wielkość uchwytu D mm									
		100	125	160	200	250	315	400	500	630	800
L		40	60	60	80	80	120	120	160	160	160
d1		10	18	18	30	30	53	53	75	75	160
		14	25	30	40	53	75	100	100	125	200
		18	30	40	53	75	100	125	125	160	160
d2		40	50	50	80	80	125	125	200	200	325
d3		75	100	135	162	200	252	282	282	325	500
d4		50	62	88	96	150	210	250	300	400	400
d5	SJ	80	100	100	160	160	250	250	400	400	400
	SD	-	120	150	185	225	300	350	400	400	500
A Class	a	0,010		0,012		0,015	0,018	0,024	-	-	-
	b	0,012		0,015		0,018	0,018	0,024	-	-	-
	c	0,006		0,009		0,009	0,012	0,012	-	-	-
I Class	a	0,010	0,015		0,020		0,025	0,030	0,050	0,070	0,100
	b	0,013	0,018		0,023		0,028	0,033	0,055	0,075	0,100
	c	0,008	0,010		0,013		0,015	0,015	0,030	0,050	0,050
normal Class	a	0,020	0,030		0,040		0,050	0,060	0,100	0,100	0,150
	b	0,025	0,035		0,045		0,055	0,065	0,075	0,100	0,150
	c	0,015	0,020		0,025		0,030	0,030	0,050	0,050	0,060

3-jaws and 4-jaws, self-centering steel body scroll chucks with:

- with **DIN 6350** plain back mounting
- with **DIN 55026** type **A** mounting
- with **DIN 55027** type **C** mounting
- with **DIN 55029** type **D** mounting
- with **DIN 6350** plain back and front mounting
- fine adjustment mounting

Manual and power chucks jaws

● Samocentrujące, 3– i 4-szczękowe **uchwyty tokarskie** ze stalowymi korpusami z mocowaniem:

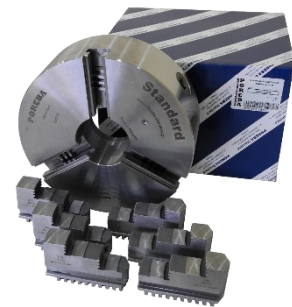
- cylindrycznym z mocowaniem od tyłu wg **DIN 6350**
- typu **A** wg **DIN 55026**
- typu **C** wg **DIN 55027**
- typu **D** wg **DIN 55029**

cylindrycznym z mocowaniem od tyłu i od przodu wg **DIN 6350**

- z regulowanym osadzeniem

● **Szczęki** do uchwytów z mocowaniem ręcznym i mechanicznym

TÜV NORD ISO Certification Nr 44100132840



Fabryka Narzędzi POREBA Sp. z o.o.

Zakładowa 2A
PL-42-480 Poręba

POLAND

biuro@fn-poreba.pl

bok@fn-poreba.pl

tel/fax: +48 (32) 646 62 31